

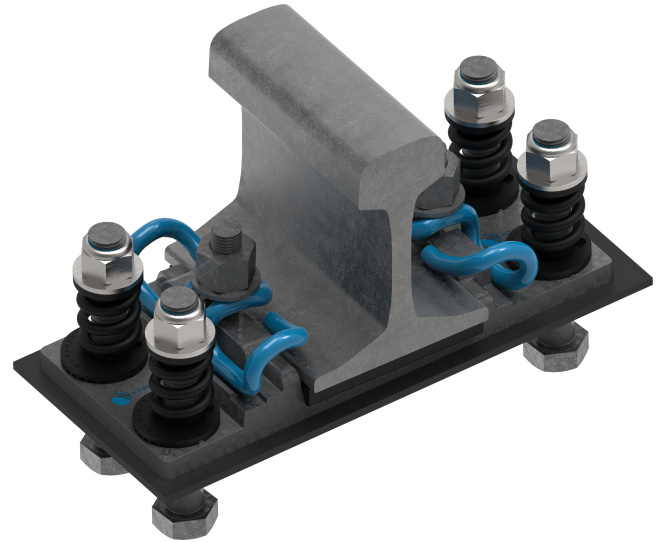


# KE 1/4 MOST

## Description

The KE1/4 MOST system is dedicated to ballastless track surface construction. The "KE1/4 MOST" rail fastening system is designed for the 60E1 rail (rail foot width of 150mm) to ensure the required track gauge and clamping force, as well as to prevent the rails from shifting relative to the ballastless track slab (steel). The system complies with the requirements of the PN-EN 13481-5 standard.

The specially shaped surface of the adjustment pad and ribbed plate allows for the adjustment of a single ribbed plate in the horizontal plane within a range of  $\pm 5$  mm from the nominal position (in 1 mm increments), enabling track gauge adjustment within a range of  $\pm 10$  mm in 1 mm increments.



## Advantages and Unique Features of the KE1/4 MOST System

- » Vertical position adjustment is achieved by using adjustment pads.
- » Pre-assembled rail sections with the rail fastening system can be delivered directly to the construction site.
- » We provide technical support during installation.
- » Excellent electrical insulation.
- » The cross slope for the 60E1 rail is 1:40 (adjustable to meet customer requirements).
- » The use of nuts with custom-sized polyamide inserts effectively impedes disassembly of the system by unauthorized individuals.
- » possible usage the under-baseplate pad with static stiffness according to customer requirements, alternatively special grouts with anti-vibration properties

06-2024/V1