



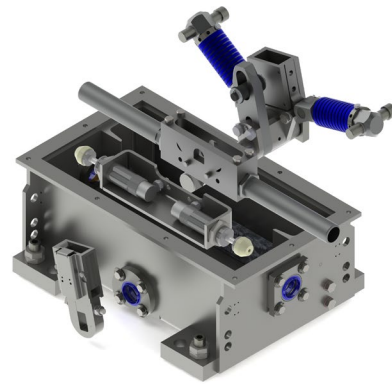
UNISTAR CSV 34

Flexible to use and easy to operate Manual Point Setting Device for Urban and Mixed Traffic

Description

Setting of the turnout direction is performed manually via the lever recess, acting directly onto the mechanical unit, or by the trailing operation of a vehicle, passing in trailing direction. A functional extension, e.g. with an end position detector, is possible with an additional unit.

To further increase availability and decrease maintenance expenses at the same time, a watertight version of UNISTAR CSV 34 is available. This results in obvious maintenance advantages and thus significant effort and cost savings, as the setting mechanism, springs and dampers are fully protected against environmental impacts like sand, dirt, snow and melt water. Furthermore, end position contacts in case of detector rods are also perfectly protected. Also proximity or mechanical contacts and End Position Detectors with Detection Rods are optimally protected and thus remain reliably available for longer.



UNISTAR CSV 34 is made of high performing corrosion-resistant materials and has proven its performance in various climate conditions as a reliable Manual Point Setting Equipment.

System advantages

- » Well proven product concept with extra low maintenance efforts
- » All functionally relevant parts made of inductive hardened special steel
- » In its watertight version, all mechanical units are permanently protected against dirt and salt
- » Frame and housing made of non-corroding stainless steel
- » Earth box designed for 12 t axle load (as an option up to 50 t, fulfilling load classes D400 and E600 standards)
- » Maintenance-free bearings
- » Turning frame for mode change 'reversing' – 'non-reversing', no additional parts needed
- » Adjustment performed in less than 5 minutes



Additional Description

Due to its compact design it is also possible to retrofit into existing earth boxes. Simple change of operating mode between 'reversing' and 'non-reversing' is performed by turning one component only. All modules of the UNISTAR CSV 34 are both, easily accessible and easily adjustable.

Its self-explaining structure reduces training requirements to a minimum. Particularly striking features are its two separate adjustable dampers and coil springs. Therefore, it is optimized to react on different conditions of both setting directions.

Technical characteristics

Designation	Value / Type
Turnout type	grooved and vignol rail
Gauge (mm)	900-1435
Throw range (mm)	36 to 120, adjustable without part replacement
Main dimensions LxWxH (mm)	597x274x169 depending on version
Overall mass (kg)	31-85, depending on version
Temperature range	-25°C to +80°C
Protectoin class	up to IP67
Fixation to track	Sleeper fixation angles / Earth boxes, in track center or beside the track
Housing material	Stainless steel
Locking	trailable and non-trailable
Max. Holding force per side	up to 2,8 kN (depending on coil spring version)
Manual throw force	approx. 180-240 N (depending on coil spring version)
Max. trailing speed	25 km/h