



UNISTAR EM

Electro-hydraulic Point Setting System for Freight, Urban and Mixed Traffic

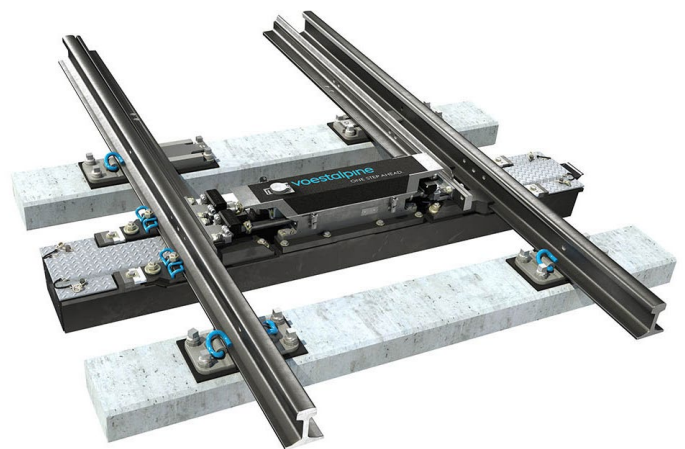
Description

Due to its compact design the locking unit can be installed between the gauges for gauges starting with 1435 mm. For smaller gauges, the installation takes place next to the track.

The connecting rods compensate for thermal expansion and contraction of the switch points up to 60 mm without affecting the end position adjustments.

The UNISTAR HR series also include

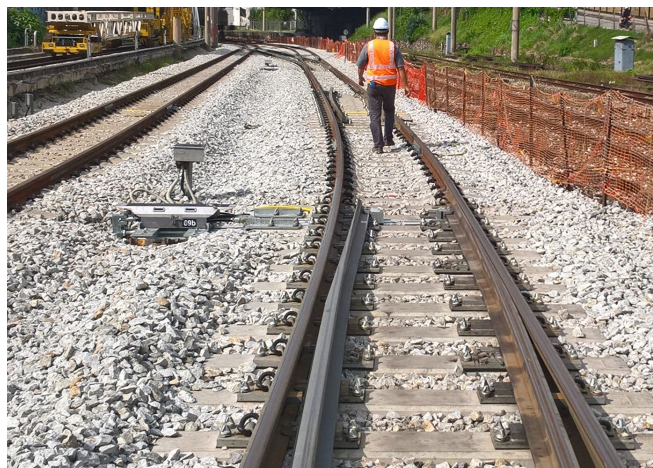
- » UNISTAR HR (electro-mechanic)
- » UNISTAR HR COMPACT (Drive, Locking and Setting in one housing)
- » UNISTAR NG (designed for narrow gauge, min. 900 mm)



Worldwide under various environmental and operation conditions, the UNISTAR HR family proves market leading quality and reliability.

System advantages

- » Durable watertight and dust tight box, according to IP67
- » Extremely low profile – under 180 mm constructional height only
- » Safe and reliable
- » Designed according to SIL 4
- » Locking parts visible, made of special steel
- » Easy access to end position contacts
- » Easily installed
- » Low maintenance, low wear and tear, low noise emission
- » Electronic detection, therefore no coupling necessary
- » Prepared for zentrak – Intelligent Diagnostic Platform



Technical characteristic

Designation	Value / Type
Turnout Type	Vignol and grooved rail
Gauge (mm)	900 - 1435
Throw range (mm)	60 - 160
Main dimensions (mm)	1000x290x174
Overall mass (depending on protection class)	approx. 80 kg
Temperature range, max. humidity	-40°C to +80°C, tested for 95 % rel. humidity
Safety level	SIL 4
Protection class	IP67
Fixation to track	earth box, Sleeper fixation angles, stock rail fixation, hollow steel bearer, installation in center of or beside the track
Housing Material	Aluminium
Locking system	internal prism lock, trailable and non-trailable
Throw time	2-5 sec
Throw force	up to 6 kN
Holding Force	90 kN
Power supply	110 – 550 V AC and DC