

Lasting Connections

weldNet[®] PROCESS MANAGER

Digitize your welding process





LASTING CONNECTIONS

As a pioneer in innovative welding consumables, Böhler Welding offers a unique product portfolio for joint welding worldwide. More than 2000 products are adapted continuously to the current industry specifications and customer requirements, certified by well-respected institutes and thus approved for the most demanding welding applications.

Our customers benefit from a partner with

- » the highest expertise in joining, rendering the best application support globally available
- » specialized and best in class product solutions for their local and global challenges
- » an absolute focus on customer needs and their success
- » a worldwide presence through factories, offices and distributors

INCREASE YOUR WELD QUALITY AND DIGITIZE YOUR WELDING PROCESS WITH weldNet® PROCESS MANAGER

Are you still tracking welds manually? You are not alone, but there is a better way. Connect weldNet® Process Manager to your welding equipment and digitally track all welding data, enabling you to reduce your costs and increase your arc-on burning time. And watch your quality assurance improve.

Manual welding documentation can be tedious, time-consuming, and prone to error, and it also does not provide you with a real-time overview of all your welding activities.

Save Time and Focus on What Matters Most

weldNet® Process Manager revolutionizes this by providing a digital monitoring solution that optimizes your welding activities. With weldNet® Process Manager, all weld details are recorded in a central, secure database that is easily accessible and always up to date. This automated system ensures that all members of your team have the latest data, increasing transparency and reducing reliance on manual records.

The Process Manager runs exclusively on proprietary on-premise hardware, with all information securely stored locally within your company's network. This ensures complete control over your data and eliminates any reliance on cloud-based solutions for enhanced security.

Why choose weldNet® Process Manager?

Reduce your Costs with Project Management and Cost Controlling

- » Cost and time savings, as the **full documentation** of welding parameters is done **digitally** and no manual work is required
- » **Project Management** – holistic project overview for better management of all tasks
- » **Cost Tracking:** comprehensive overview of project costs, including personnel, energy and materials used
- » **Maintenance alerts:** timely equipment maintenance alerts, to ensure uninterrupted workflow
- » **Kanban based task management:** assignment of priority tasks

Increase your productivity

- » Save time with a **remote access to all your welding machines** and use the weldNet® Process Manager to assign and prioritize welding jobs
- » More arc-on burning time as welders receive their tasks immediately, making you more productive as a team

Quality assurance

- » Errors are recorded at the time they occur and proactive measures can be taken immediately. This supports your quality assurance process.
- » Welder Qualification: Intuitive user interface for tracking personnel certification
- » Synergic programs and parameter settings
- » Verification of correct material used for the welding tasks.

Monitor the Perfect Weld Seam and find out all the benefits for you.

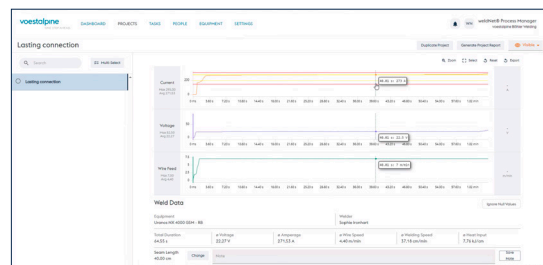
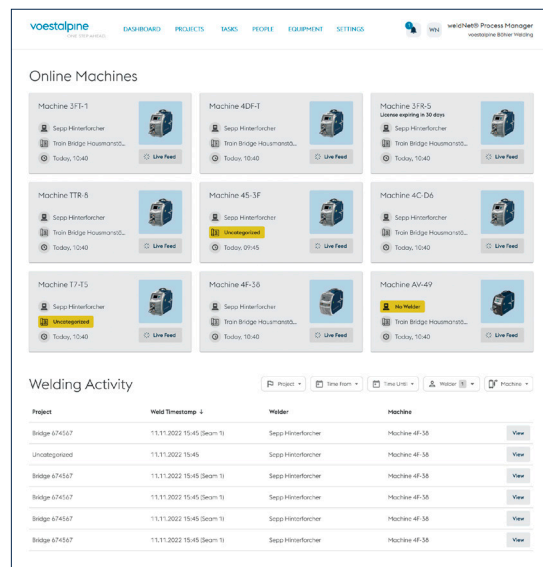
Scan for more information.





ARE YOU AN INDUSTRIAL WELDING ENGINEER?

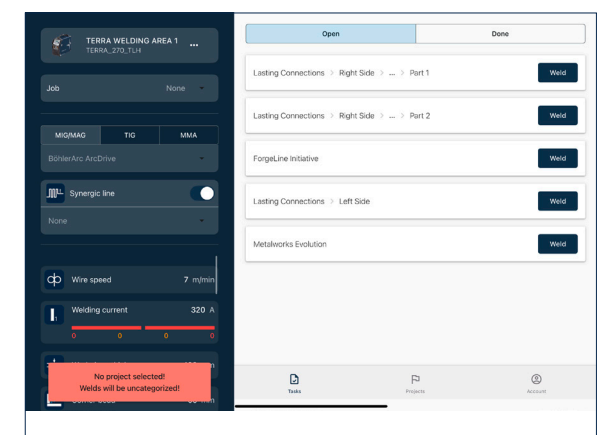
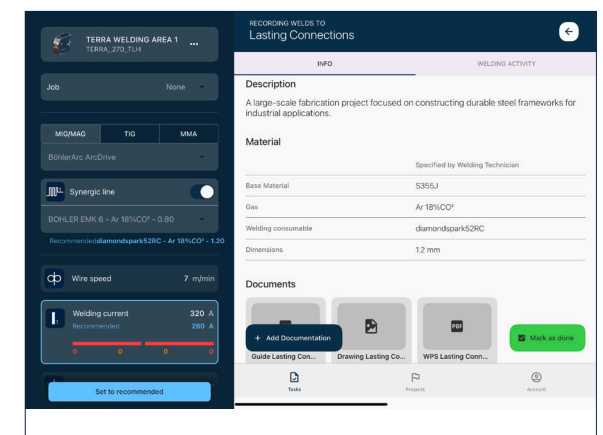
Enjoy the power of the state-of-the-art software solution that supports your complete welding journey including remote access to welding equipment for parameter setting & monitoring, full documentation of welding parameters, project and personnel management, and easy welding cost control.



Gain the ability to effortlessly transform prioritized tasks and guidelines into documented welding activities through a simple touch on your tablet.



- » Task-Oriented Dashboard - Prioritized tasks at a glance
- » Task Details - Engineer-created task descriptions, parameters and material recommendations
- » Welding Process and Parameter Adjustment - Quick and easy real-time process and parameter adjustments
- » Overall Activity Summary - Overview of all welding activities, interpass temperature documentation and verification of correct material
- » Offline Welding Recording - Capture welding data offline and synchronize it later





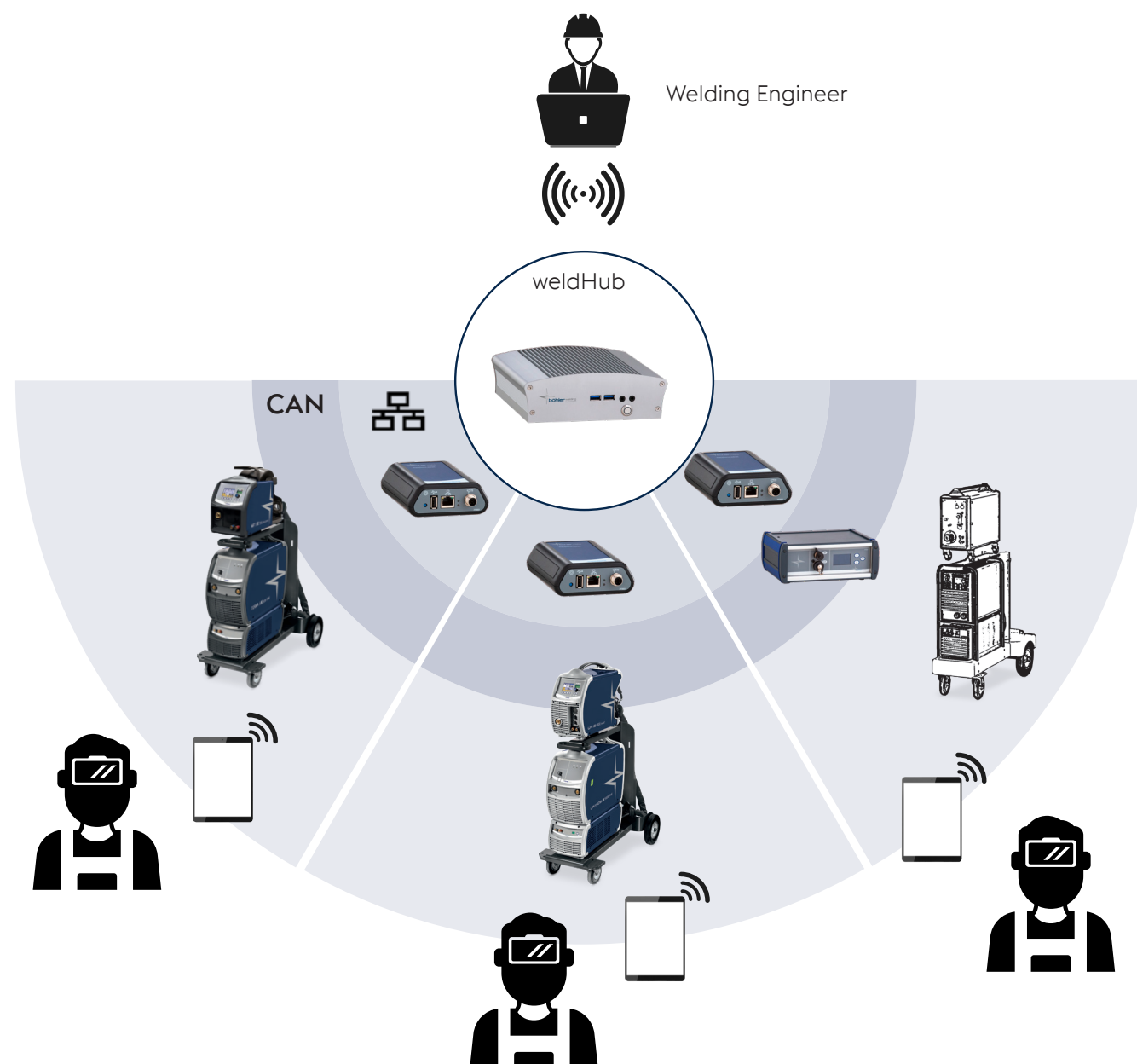
Scan to watch the
Process Manager in Action



THE weldNet® PROCESS MANAGER TEAM

A UNIQUE SYMBIOSIS OF HARDWARE,
SOFTWARE AND HUMAN INTERACTION TO
GET THE PERFECT WELD SEAM.

Modern industrial welding demands complete and detailed control and management to ensure the efficiency and reliability of the entire production cycle and to allow a correct evaluation of welding costs and return on investment. The complete software solution, including your welding activity data, is securely stored locally/on-premise on the WeldHub.



EXPLORE THE POTENTIAL OF weldNet® CONNECTION OF URANOS NX AND TERRA NX UNIVERSES

Benefit from the great advantages of Böhler Arc technology;
the perfect combination of welding consumable, process, equipment
and software solution.



- » More than 600 Welding Programs with Böhler Welding consumable and processes: Solid Wire, Metal Cored, Flux cored and many others.
- » Welding program packages for any material: carbon steel, stainless steel, aluminum and many other.
- » Complete communication of all the data and status of the equipment.

weldNet® PROCESS MANAGER HARDWARE



weldHub

Storage: 1 TB SSD
LAN: 2x RJ45 @ 10/100/1000 Mbit/s
Power supply: DC-Input 8-24V
Dimensions: 148 x 57 x 157 mm

weldSync

Storage: 128 GB
I/O CAN-BUS-Ethernet TCP/IP-USB
Main supply: via CanBus from Böhler Welding equipment
Dimensions (approx.):
Desk: 140 x 100 x 40 mm
WS: 120 x 230 x 40 mm
DS: 130 x 105 x 35 mm

weldSense

Optional for connecting other branded equipment
Sensors: current / voltage / gas flow / wire speed (opt) / deposition rate
I/O CanBus
Main supply: 1 x 230V AC
Dimensions: 250 x 195 x 105 mm

ALWAYS WITH YOU: BEFORE AND AFTER

- » Our competent staff supports the design and the setup of the weldNet® Process Manager application
- » Our extensive knowledge of welding consumables, welding processes and metallurgy is at your disposal to achieve the maximum quality and productivity possible
- » Our after-sales service is always ready to assist you quickly for any needs on-site or remotely. Periodic maintenance plans for the installed equipment are also available

WELDING CONSUMABLES FOR MOST DEMANDING APPLICATIONS

- » We offer a globally unique and complete product portfolio of welding consumables from own production
- » All welding consumables are optimally coordinated with our welding equipment
- » Our welding consumables are certified by well-respected institutes and approved for the most demanding welding applications

EXPERIENCE THE PERFECT WELD SEAM

- » Improved competitiveness due to higher productivity and a guaranteed premium welding result
- » Comprehensive support from concept to installation from one source
- » Industry proven turnkey systems with perfectly coordinated components

Curious how our customers use the Process Manager? Click to watch!



JOIN! We connect Metals and People

As a leader in the world of welding and part of the voestalpine steel and technology group, we are close to you with more than 100 years of experience, 50 subsidiaries and 4,000 sales partners worldwide. Thanks to our comprehensive product portfolio, welding expertise and global orientation, we know your needs and, as a total solution provider, ensure the best results for your most demanding challenges. Perfectly interlinked and as unique as your business.



Lasting Connections – Perfect alignment of welding machines, consumables and technologies combined with our renowned application and process know-how provide the best result for your requirements: A true and proven connection between people, products and technologies. The result is what we promise: The Perfect Weld Seam for Lasting Connections.



Tailor-Made Protectivity™ – Proven under the toughest conditions: Our products protect metal surfaces from wear and corrosion. With over 70 years of experience and the broadest product portfolio in the industry, we are your preferred partner for Surface Protection solutions. We deliver what we promise: Surface Protection tailored to your needs.



In-Depth Know-How – As a manufacturer of soldering and brazing consumables, we offer proven solutions based on 60 years of industrial experience, tested processes and methods, made-in-Germany. This in-depth know-how makes us the internationally preferred partner to meet your soldering and brazing challenge through innovative solutions. The result is what we promise: Innovation based on in-depth know-how.

The Management System of voestalpine Böhler Welding Group GmbH, Peter-Mueller-Strasse 14-14a, 40469 Duesseldorf, Germany has been approved by Lloyd's Register Quality Assurance to: ISO 9001:2015, ISO 14001:2015, OHSAS 18001:2007, applicable to: Development, Manufacturing and Supply of Welding and Brazing Consumables. More information: www.voestalpine.com/welding



