

Lasting Connections

INVERTERS FOR ARC WELDING

TERRA & URANOS





LASTING CONNECTIONS

As a pioneer in innovative welding consumables, Böhler Welding offers a globally unique range of products for joint welding. More than 2,000 products are being adapted continuously to the current industry specifications and customer requirements, certified by well-respected institutes and thus approved for the most demanding welding applications.

"Lasting Connections" is the brand philosophy, both for welding and on a human level - as a reliable partner for the customer.

TERRA & URANOS – THE NEW REFERENCE IN WELDING MACHINES.

You've taken on the challenge of joining materials made of metal. You know how to weld structures for bridges, machines and power stations. In your job you don't need "one" solution, you deserve the best.

As a provider of welding solutions, we offer a unique portfolio of high-quality welding consumables, application services, accessories and welding equipment. With the Terra & Uranos ranges, we are setting new standards in all

standard and special welding processes. The combination of welding filler metal and power source, which is unique in the industry and based on our application know-how, takes precision to a new dimension.

This allows you to obtain TOP CLASS welded joints that you will be proud of. This is what we stand for - with up to 5 years warranty on all Terra & Uranos welding equipment.

Advantages for our customers:

- » Böhler Welding combines metallurgical know-how, technical competence and a complete product range like no other supplier on the market.
- » Welding consumable and welding machine meet in a perfect synergy for all customers of Böhler Welding.
- » Optimised performance curves lead to first-class welding results.
- » Böhler welding machines made in Europe guarantee the highest quality of products and services.
- » We stand by our quality promise and provide up to 5 years warranty.
- » Our customers can always rely on a trusting partnership and lasting relationships.

ONE INVERTER TECHNOLOGY TWO PRODUCT RANGES

The key component of our welding power sources is the patented Multiline Three Level® Inverter.

This modern and technically advanced inverter offers unbeatable long run performance and reliability. Customers particularly appreciate those advantages when it comes to arc control, adaptability to different processes and applications, accuracy and repeatability.



MIG/MAG STANDARD

Designed for amazing welding performance

- » Particularly efficient MIG/MAG standard process for extremely precise welds
- » Enables very homogeneous and clean metallurgical properties
- » Very stable and perfectly controllable electric arc
- » High welding speed and melting capacity



TERRA 320 SMC

320 A @ 45%
3x400 V
3 – 320 A
33,0 kg



TERRA 400 SMC

400 A @ 40%
3x400 V
3 – 400 A
34,0 kg

MIG/MAG PULSE

Perfect welding results thanks to “Digital Drop”

- » Enables optimum MIG/MAG pulse welding with consistent and reproducible performance thanks to new welding technology
- » Extremely stable and concentrated arc
- » Simple parameter control for efficient work



TERRA 320 PMC / 400 PMC

320 A @ 45% / 400 A @ 40%
3x400 V
3 – 320 A / 3 – 400 A
33,0 kg / 34,0 kg



TERRA 400 PMC

400 A @ 40%
3x400 V
3 – 400 A
34,0 kg

MULTIPROCESS

Up to any welding task

- » Ideal for MMA, MIG/MAG pulse and TIG DC welding process
- » Designed to handle a wide range of welding tasks
- » Developed to meet the highest demands with regard to flexibility and performance
- » Perfect for repair and maintenance as well as training facilities



TIG DC

The precision arc

- » Highly concentrated and stable electric arc
- » Aesthetically perfect welding seams
- » Optimum welding conditions in all working situations



TERRA 180 TLH

170 A @ 45%
1x230 V
3 – 170 A
8,4 kg

TIG AC/DC

Best in class

- » Guaranteed concentrated and stable arc
- » Reduced heat input
- » High-quality weld seam and considerable increase in productivity with only one set value



MMA

Light and flexible

- » Very compact and powerful inverter
- » Suitable for cellulose
- » Intuitive operation
- » Generator safe



TERRA 150

150 A @ 35%
1x230 V
5 – 150 A
4,1 kg



TERRA 180

170 A @ 35%
1x230 V
3 – 170 A
8,0 kg

FOR STANDARD WELDING TASKS

Robust and user-friendly

URANOS

SMC



TERRA MX 320 MSE

320 A @ 50%
3x400 V
3 – 320 A
20,2 kg



TERRA MX 400 MSE / 500 MSE

400 A @ 50% / 500 A @ 50%
3x400 V
3 – 400 / 500 A
22,5 / 27,5 Kg

MIG/MAG



URANOS 2000 SMC

200 A @ 35%
1x230 V
5 – 200 A
12,8 kg

PMC DUALFEEDER



TERRA MX 320 PME

320 A @ 50%
3x400 V
3 – 320 A
20,2 kg



TERRA MX 400 PME / 500 PME

400 A @ 50% / 500 A @ 50%
3x400 V
3 – 400 / 500 A
27,5 / 32,5 Kg

MIG/MAG PULSE



URANOS MX2200 PMC

220 A @ 35%
1x230 V
3 – 220 A
22,0 kg

MULTIPROCESS



URANOS MX2200 MTE

220 A @ 35%
1x230 V
3 – 220 A
22,5 kg

TERRA MX 270 TLH



270 A @ 60%
3x400 V
3 – 270 A
16,1 kg

TERRA MX 320 TLH



320 A @ 60%
3x400 V
3 – 320 A
20,5 kg

TERRA MX 400 TLH



400 A @ 50%
3x400 V
3 – 400 A
22,5 kg

TIG DC



URANOS 1500 TLH

150 A @ 30%
1x230 V
3 – 150 A
3,9 kg

TIG AC/DC



URANOS MX1700 AC/DC

170 / 220 A @ 35%
1x115 - 230 V
3 – 170 / 220 A
18,8 kg

TERRA 220 RC



220 A @ 30%
3x400 V
3 – 220 A
11,3 kg

TERRA 270 RC / 350 RC



270 A / 350 A @ 40%
3x400 V
3–270 A / 3–350 A
16,1 kg / 16,5 kg

TERRA 500 RC



500 A @ 50%
3x400 V
3 – 500 A
27,3 kg

MMA



URANOS 1500 / 1500 RC

150 A @ 30%
1x230 V
5 – 150 A
2,6 kg

FOR THE HIGHEST DEMANDS

Efficiency & technological excellence

URANOS ~~MX~~ 2200 SMC

220 A @ 35%
1x230 V
3 – 220 A
22,0 kg



URANOS ~~MX~~ 2700 SMC

270 A @ 45%
3x230 - 400 V
3 – 270 A
23,0 kg



URANOS ~~MX~~ 2700 PMC

270 A @ 45%
3x230 - 400 V
3 – 270 A
23,0 kg



URANOS ~~MX~~ 3200 PME

320 A @ 50%
3x230 - 400 V
3 – 320 A
27,6 kg



URANOS ~~MX~~ 4000 PME

400 A @ 60%
3x230 - 400 V
3 – 400 A
36,2 kg



URANOS ~~MX~~ 5000 PME

500 A @ 50%
3x230 - 400 V
3 – 500 A
38,5 kg



URANOS ~~MX~~ 2700 MTE

270 A @ 45%
3x230 - 400 V
3 – 270 A
23,5 kg



URANOS ~~MX~~ 3200 GSM

320 A @ 50%
3x230 - 400 V
3 – 320 A
27,6 kg



URANOS ~~MX~~ 4000 GSM

400 A @ 60%
3x230 - 400 V
3 – 400 A
37,5 kg



URANOS ~~MX~~ 5000 GSM

500 A @ 50%
3x230 - 400 V
3 – 500 A
39,5 kg



URANOS 1800 TLH / ~~MX~~ 2200 TLH

180 / 220 A @ 35%
1x115-230 V
3 – 180 / 220 A
9,4 / 16,0 kg



URANOS ~~MX~~ 2700 TLH / 3200 TLH

270 A @ 35% / 320 A @ 40%
3x230 - 400V
3 – 270 / 320 A
18,8 / 26,0 Kg



URANOS ~~MX~~ 4000 TLH / 5000 TLH

400 A @ 60% / 500 A @ 50%
3x230 - 400 V
3 – 400 / 500 A
35,4 / 37,3 Kg



/ 2200 AC/DC URANOS ~~MX~~ 2700 AC/DC URANOS ~~MX~~ 3200 AC/DC URANOS ~~MX~~ 4000 AC/DC URANOS ~~MX~~ 5000 AC/DC

270 A @ 40%
3x230 - 400V
3 – 270 A
27,0 kg



320 A @ 40%
3x230 - 400 V
3 – 320 A
27,5 kg



400 A @ 40%
3x230 - 400 V
3 – 400 A
35,4 kg



500 A @ 45%
3x230 - 400 V
3 – 500 A
37,3 Kg



URANOS 1500 DP

150 A @ 30%
1x230 V
5 – 150 A
2,6 kg



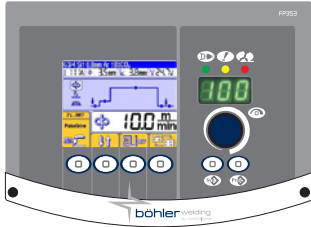
URANOS 1800 RC

170 A @ 35%
1x115-230 V
3 – 170 A
9,0 kg



URANOS – FOR THE HIGHEST DEMANDS

Efficiency & technological excellence



iPANEL

URANOS devices are equipped with the new iPanel as standard. The large (3.5") and clear graphic display offers a unique, user-friendly working interface.



ROBOT READY

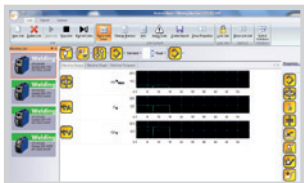
URANOS welding machines are pre-equipped for automated and robotic applications and are therefore predestined for efficient high-performance welding. URANOS devices are equipped with all hardware and software components necessary for this.



EFFICIENT WELDING

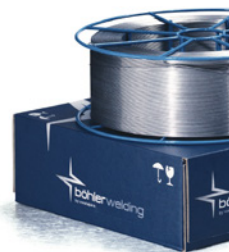
Saving energy - increasing efficiency

URANOS machines are equipped with the patented greenWave® technology. This technology complies with the EN61000-3-12 standard and enables extremely energy-efficient operation with optimised power consumption.



WELDNET SYSTEM

Thanks to the exclusive Weld@net® Production Control Monitor software, you can conveniently control several devices simultaneously via your PC and also display and set all welding parameters. With Weld@net® PCM, you can also calculate the quality and productivity of automatic or manual welding systems through sophisticated system and controlling reporting.

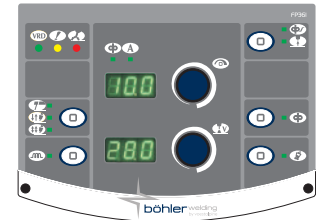


TERRA – FOR STANDARD WELDING TASKS

Robust and user-friendly

TERRA welding machines from Böhler Welding are available for MMA welding, TIG DC and MIG/MAG processes. The compact and robust design of the machines allows them to be used in a wide variety of working environments, even in confined spaces.

TERRA welding machines from Böhler Welding thrive under heavy use and guarantee durable connections.



What TERRA welding machines are all about:

- » Simple operation for the welder
- » Low weight
- » Ideal for steel and stainless steel
- » Flexibly deployable
- » Suitable for use on construction sites and fabrication shops



JOIN! voestalpine Böhler Welding

We are a leader in the welding industry with over 100 years of experience, more than 50 subsidiaries and more than 4,000 distribution partners around the world. Our extensive product portfolio and welding expertise combined with our global presence guarantees we are close when you need us. Having a profound understanding of your needs enables us to solve your demanding challenges with Full Welding Solutions - perfectly synchronized and as unique as your company.



Lasting Connections – Perfect alignment of welding machines, consumables and technologies combined with our renowned application and process know-how provide the best solution for your requirements: A true and proven connection between people, products and technologies. The result is what we promise: Full Welding Solutions for Lasting Connections.



Tailor-Made Protectivity™ – Proven under the toughest conditions: Our products protect metal surfaces from wear and corrosion. With over 70 years of experience and the broadest product portfolio in the industry, we are your preferred partner for Surface Protection solutions. We deliver what we promise: Surface Protection tailored to your needs.



In-Depth Know-How – As a manufacturer of soldering and brazing consumables, we offer proven solutions based on 60 years of industrial experience, tested processes and methods, made in Germany. This in-depth know-how makes us the internationally preferred partner to solve your soldering and brazing challenge through innovative solutions. The result is what we promise: Innovation based on in-depth know-how.

The Management System of voestalpine Böhler Welding Group GmbH, Peter-Mueller-Strasse 14-14a, 40469 Duesseldorf, Germany has been approved by Lloyd's Register Quality Assurance to: ISO 9001:2015, ISO 14001:2015, OHSAS 18001:2007, applicable to: Development, Manufacturing and Supply of Welding and Brazing Consumables. More information: www.voestalpine.com/welding



