



# 300HH

## Rail fastening system

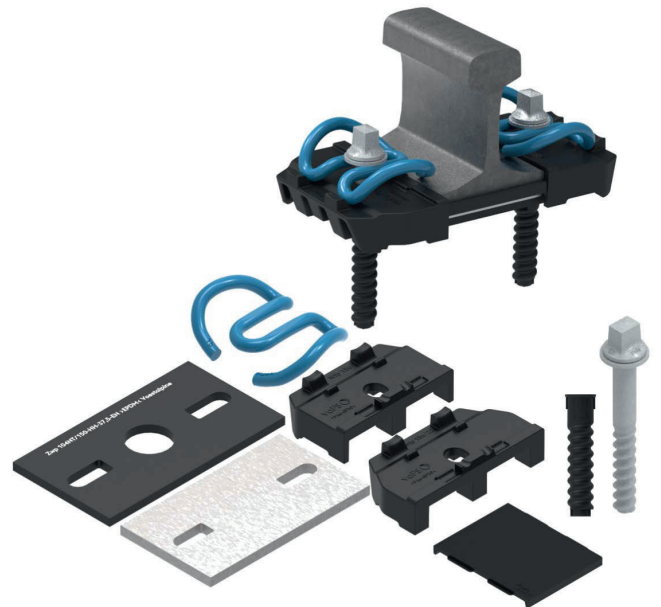
### Description

300HH type rail fastening system is designed for E category according to EN 13481-2 standard, with a maximum permissible axle load of  $\geq 350$  kN and minimum curve radius of 150 meters.

This rail fastening system is provided with a Elastics pad of static stiffness  $37.5 \text{ kN/mm} \pm 15\%$ .

Due to the mid-loop of the SKL15 clip, which is mounted over the rail foot, this rail fastening solution is characterized by additional flexibility.

This eliminates the possibility of overloading the clip arms and their plastic deformation, as well as prevents rail rotation.



### Technical aspects of 300HH system

#### typical field of application – Heavy Haul for slab track

- » axle load –  $\leq 35 \text{ t}$
- » speed –  $\leq 160 \text{ km/h}$
- » high rail longitudinal resistance – min.  $9 \text{ kN}$
- » electrical resistance  $\geq 5 \text{ k}\Omega$
- » static stiffness of elastic pad  $37.5 \text{ kN/mm} \pm 15\%$
- » gauge adjustment in the range of  $\pm 16 \text{ mm}$
- » clamping force for SKL15 (nominal) – The theoretical minimum clamping force after loading must be  $\geq 7 \text{ kN}$  acc. to DB drawing
- » height adjustment  $-4/+26 \text{ mm}$
- » angle head shape
- » all of the components can be pre-assembled