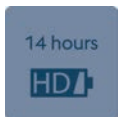


EVOLUTION V80/V80M AIR KIT

Air-Purifying Respiratory System



Customer benefits



Provides an operating time up to 14 hours



Fast & easy filter change - for an extended protection against harmful gases



For a perfect airflow setting according to your personal needs



For a reliable protection of your respiratory tract

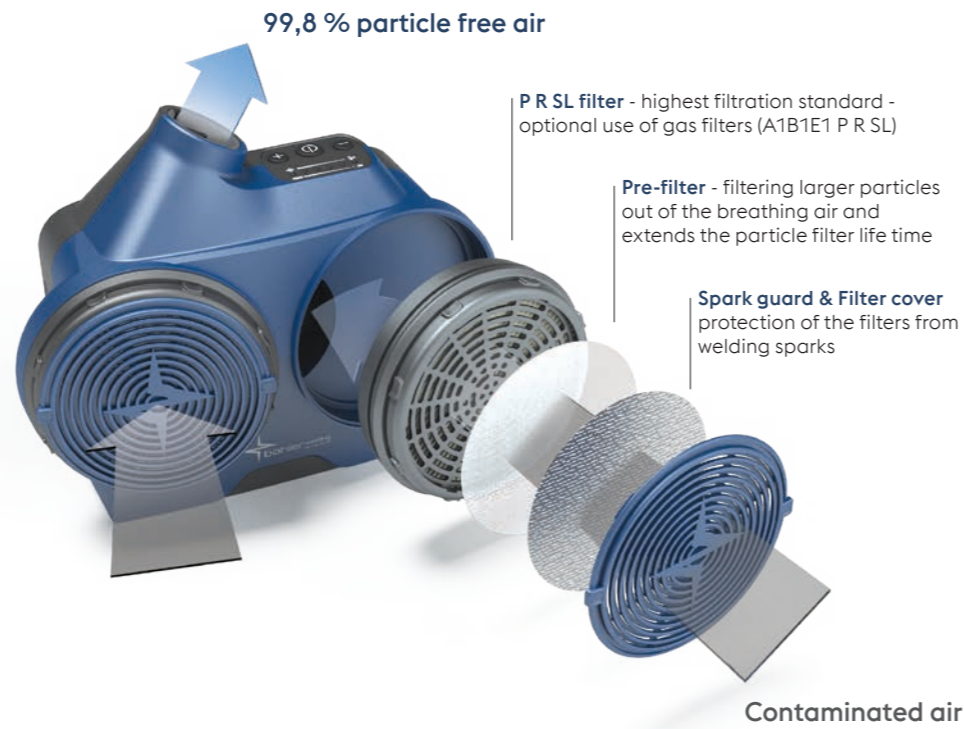


For your constant safety - with a visual, audible and vibrating warning system



Shoulder harness with chest buckle for an ergonomic wearing comfort and an ideal weight distribution

EVOLUTION AIR



Evolution V80 Air Kit
with Evolution V80 Air:

- » ADF: Shade 2.5, 4-8 / 9-14, 80 x 124 mm
- » UHD display – ISO certification V1



Evolution V80M Air Kit
with Evolution V80M Air:

- » ADF: Shade 2.5, 4-8 / 9-14, 80 x 124 mm + **Auto Shade Mode**
- » Special features: Tack mode, shade lock, 2-step delay, fade delay
- » UHD display – ISO certification V1



Evolution Air (Complete Blower Unit)

| Features | |
|--|--|
| » Particle filter (P R SL) or optional use of combi filters (A1B1E1 P R SL) | |
| » Standard: EN 12941 protection class TH3 P R SL / TH3 A1B1E1 P R SL in combination with Evolution V80/V80M Air | |
| » Operating time: Up to 14 h with the heavy-duty battery 7.800 mAh - quick charge, included in the kit bags Evolution V80/V80M Air Kit | |
| » Charging time: 3 hours | |
| » Flow rate 180 - 240 l/min - adjustable at 6 levels | |
| » Visual, audible and vibrating warning system for insufficient airflow (below 170 l/min) and/or low battery charge | |
| » Universal quick charger (USB-C port) | |
| » Weight: 1.120 g (including battery, assembled filter) | |





| Evolution Air Kits | | MOQ* | Art.No |
|--|---|-------|--------|
| Evolution V80 Air Kit | Ready to use kit: Evolution Air with Evolution V80 Air welding helmet in a stylish bag. Incl. spares: 3 front cover lenses, 2 inner cover lenses and 20 pre-filters | 1 pce | 89509 |
| Evolution V80M Air Kit | Ready to use kit: Evolution Air with Evolution V80M Air welding helmet (with Auto Shade Mode) in a stylish bag. Incl. spares: 3 front cover lenses, 2 inner cover lenses and 20 pre-filters | 1 pce | 89510 |
| Evolution Air (Complete Blower Unit w/o head top) | Ready to use blower unit including motor unit with assembled particle filters, pre-filters, spark guards and filter covers, flexible air hose, heavy-duty battery, universal charger, comfort belt, shoulder harness and airflow tester | 1 pce | 77008 |

* MOQ (Minimum order quantity)

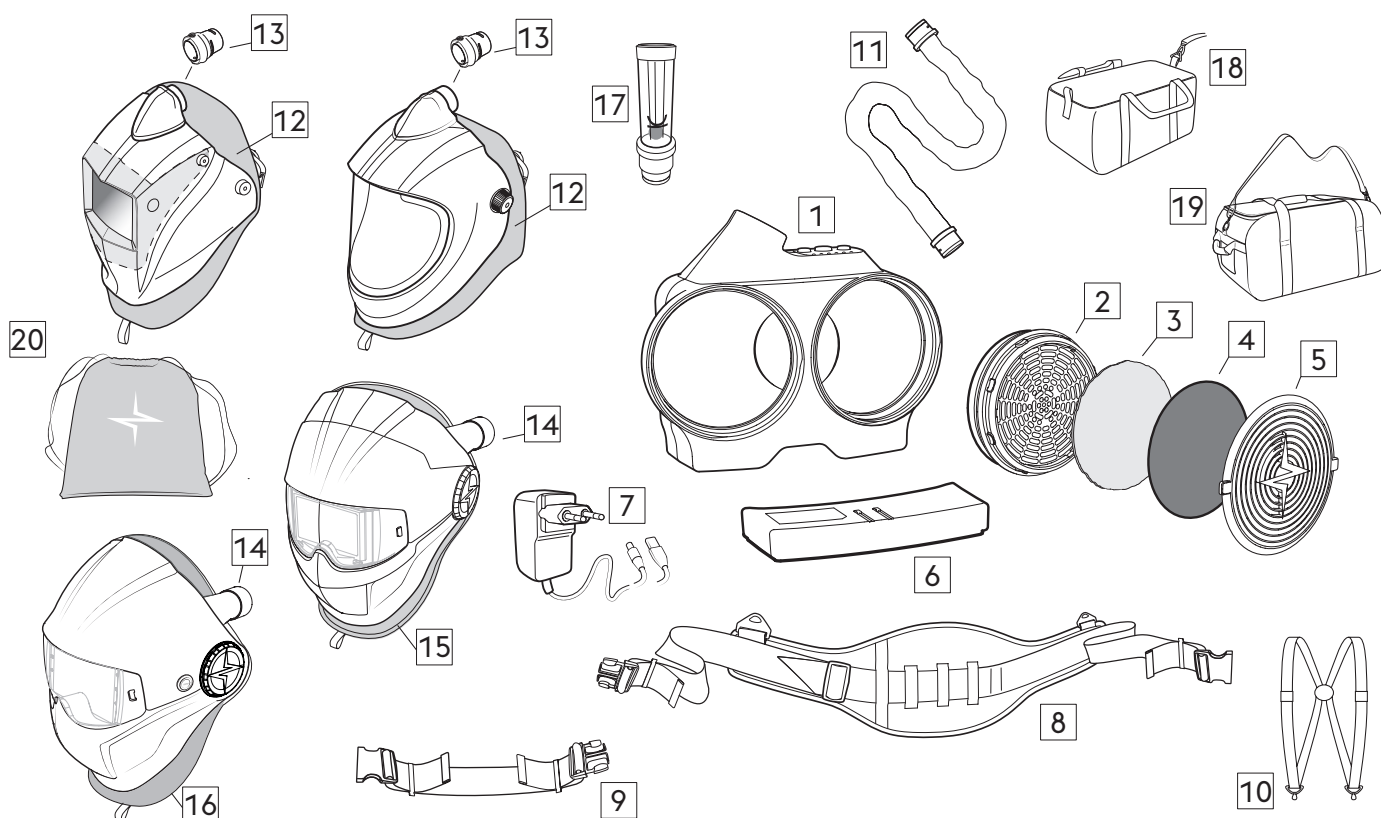
HEADTOPS FOR THE USE WITH EVOLUTION AIR (PAPR SYSTEM)



Main air streams for an optimized clean air supply to the breathing zone

| | | |
|--|---|-------|
| Guardian^{50M} Air - matt blue  | <ul style="list-style-type: none"> » ADF: Shade 4, 9-13 » External shade adjustment knob » External grind mode button » Display: 50 x 100 mm - True Colour » EN 379 classification 1/1/1/2 | 86669 |
| Guardian^{50FM} Air (flip-helmet) - matt blue  | <ul style="list-style-type: none"> » ADF: Shade 4, 5-9/9-13 » Internal grind mode setting » Display: 50 x 100 mm - True Colour » EN 379 classification 1/1/1/2 | 86682 |
| Guardian⁶² Air - glossy blue  | <ul style="list-style-type: none"> » ADF: Shade 4, 5-9/9-13 » External grind mode button » Display: 62 x 98 mm - True Blue Colour » EN 379 classification 1/1/1/2 | 57007 |
| Guardian^{62F} Air (flip-helmet) - glossy blue  | <ul style="list-style-type: none"> » ADF: Shade 4, 5-9/9-13 » External grind mode button » Display: 62 x 98 mm - True Blue Colour » EN 379 classification 1/1/1/2 | 57029 |
| Evolution Vision^{65F} Air (flip-helmet) - glossy blue  | <ul style="list-style-type: none"> » ADF: Shade 3, 4-8/9-14 » UHD-Display: 65 x 96 mm - True Colour » EN 379 classification 1/1/1/1 | 87438 |
| Evolution Vision^{65FM} Air (flip-helmet) - matt blue  | <ul style="list-style-type: none"> » ADF: Shade 3, 4-8/9-14 + Auto-Shade Mode » UHD-Display: 65 x 96 mm - True Colour » EN 379 classification 1/1/1/1 | 87440 |
| Big Vision Air (grinding visor) - glossy blue  | <ul style="list-style-type: none"> » Grinding visor » 180 x 160 mm viewing area | 73314 |
| Evolution V80M Air - matt blue  | <ul style="list-style-type: none"> » ADF: Shade 2.5, 4-8/9-14 + Auto-Shade Mode » UHD-Display: 80 x 124 mm - True Colour » ISO Classification V1 » Special features: Tack mode, shade lock, 2-step delay, fade delay | 89511 |
| Evolution V80 Air - glossy blue  | <ul style="list-style-type: none"> » ADF: Shade 2.5, 4-8/9-14 » UHD-Display: 80 x 124 mm - True Colour » ISO Classification V1 | 89508 |

SPARE PARTS



| No. | Description | Art. No. |
|-----|---|----------|
| 1 | Evolution Air motor unit | 77011 |
| 2 | Particle filter P R SL Evolution Air (4 pieces) | 88452 |
| 2 | Combi filter A1B1E1 P R SL (2 pieces) | 57127 |
| 3 | Pre-filter (20 pieces) | 57097 |
| 3 | Pre-filter (40 pieces) | 57099 |
| 3 | Odour-pre-filter (6 pieces) | 75094 |
| 4 | Spark guard (2 pieces) | 57089 |
| 5 | Filter cover (2 pieces) | 57082 |
| 6 | Heavy-duty battery (7.800 mAh) - quick charge | 87598 |
| 6 | Heavy-duty battery (7.800 mAh) | 57075 |
| 6 | Standard battery (5.200 mAh) | 86660 |
| 7 | Quick charger - to be used with 87598 - Heavy-duty battery (7.800 mAh) only | 87599 |
| 7 | Universal charger | 75685 |
| 8 | Comfort belt | 57144 |
| 8 | Leather comfort belt | 75685 |

| No. | Description | Art. No. |
|-----|---|----------|
| 9 | Comfort belt extension (265mm) | 64255 |
| 10 | Shoulder harness | 57146 |
| 11 | Flexible air hose w/o cover | 88798 |
| 11 | Air hose cover <125 cm | 88799 |
| 11 | Air hose cover <180 cm | 88801 |
| 11 | Standard air hose - non-flexible (100 cm) | 64915 |
| 12 | Face-seal (for all Guardian Air + Big Vision Air) | 57182 |
| 13 | Air duct (for Guardian Air + Big Vision Air) | 87143 |
| 14 | Air duct (for Evolution Vision Air) | 87441 |
| 15 | Face-seal (for Evolution Vision 65F/65FM Air) | 87596 |
| 16 | Face-seal (for Evolution V80/V80M Air) | 89512 |
| 17 | Airflow tester | 57184 |
| 18 | Böhler Bag blue | 57186 |
| 18 | Böhler Bag black | 86702 |
| 19 | Evolution Bag blue 2.0 | 89232 |
| 20 | Böhler Head top pouch black | 87139 |