



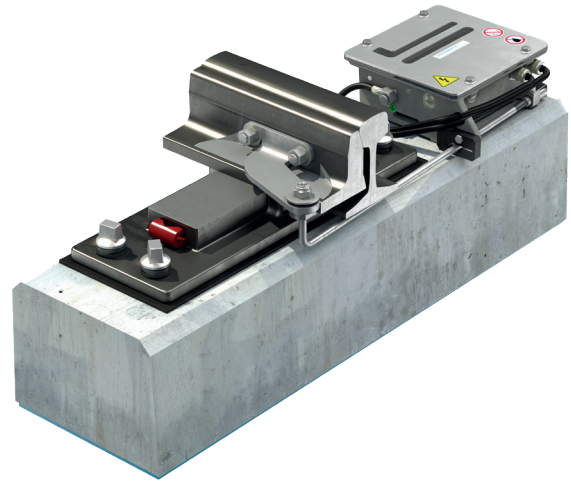
EPD 4.0 END POSITION DETECTOR

An external end position detector to monitor the position of the two switch blades

Description

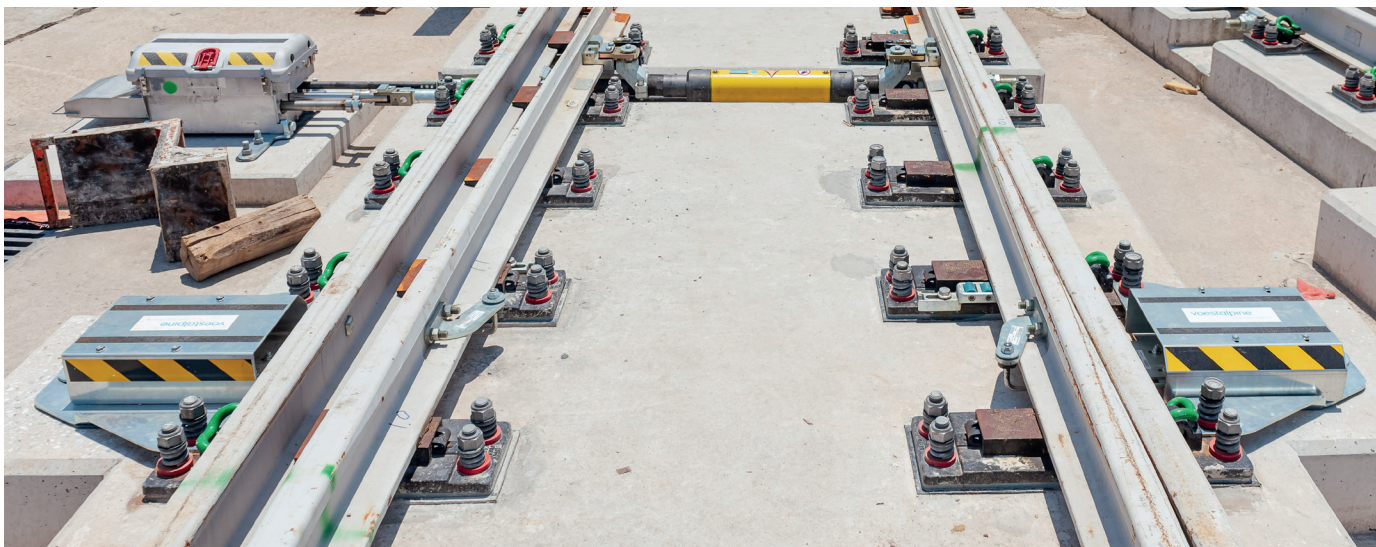
The end position detector 4.0 (4th generation end position detector) is a vital monitoring device mounted next to the track on existing railway sleepers. It is designed to enhance railway safety and efficiency. It monitors the positions of both closed and open switch rails, can verify external lock positions and detects gauge changes.

It can be installed both as an end position detector with a standard setting drive system, like ECOSTAR or in combination with the drive, locking and detection (DLD) system, such as HYDROSTAR® in a high-speed track environment and UNISTAR HR in mixed track..



System advantages

- » Machine tamping possible
- » Easy inspection and maintenance
- » Compatible with various interlocking systems and many different point machines
- » Low life cycle costs
- » No requirement for any active power supply
- » Customized solutions for retro-fitting
- » Like for like replacement of conventional end position detectors



TRENDSETTING CONCEPT

During the development of the end position detector EPD 4.0, particular attention was paid to whole life costs and MTBF/ MTR. Due to an innovative design, the main unit weighs 8 kg and has reduced height to ensure the unit is lower than top of rail (vignole designs) providing adequate clearance to the structural gauge of rolling stock. The detector is completely encapsulated and thus protected as far as possible against environmental influences.

The end position tester EPD 4.0 can be used with any standard setting, DLD system in the area of Mixed Traffic, High Speed Traffic as well as Freight Traffic and Metro lines. Due to an extensive preassembly at the manufacturer's factory, the installation and the integration into the electrical and customers signalling system of the turnout can be carried out in a few simple steps.

Technical characteristics

Designation	Value / Type
Turnout type	all types
Minimum gauge of the turnout (mm)	960 to 1678 mm
Switch openings (mm)	30 - 175
Main dimensions LxWxH (mm)	280x274x125
Overall mass (kg)	8
Temperature range	-40°C to +75°C
Suitable for longitudinal movements (mm)	max. ± 40
Safety level / class	SIL4, according to CENELEC / EN 50125-3 / 60068
Protection class	up to IP67
Housing material	stainless steel
Max. number of possible monitoring levels	10