



ELASTIC RAIL FASTENING PLATES WITH “SKL” RAIL CLAMPS

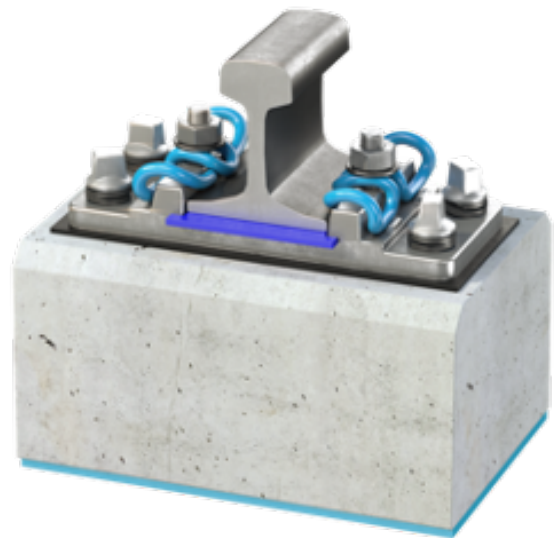
Fastening on concrete bearers in ballast track

Description

Ribbed plates with “SKL” tension clamps, rail pads and under baseplate pads are used to fasten turnout parts on concrete bearers.

The tension clamps ensure a permanently elastic clamping. The creep resistance and twisting resistance achieved meet the requirements placed on a continuously welded track.

The baseplates are mounted on the concrete bearers by four coach screws.



System advantages

- » Permanently elastic fastening
- » Good creep and torsion resistance for use in continuously welded track
- » High tilting stability by middle bend
- » Long service life
- » Low space required
- » Baseplates fastening can be selected, e.g.: Coach screws, push-through bolts, angled guide plates
- » The stiffness of the elastic rail pads can be chosen
- » Delivered with or without corrosion protection according to environmental conditions

ELASTIC RAIL FASTENING “SKL”

Additional description

The proven plate superstructure with SKL tension clamps ensures a permanent and secure fastening on bearers in ballast track.

The tension clamps can be used with or without elastic pads between the turnout components and the plates.

The defined mounting position ensures the full tensioning force of the tension clamps for different rail profiles and for pads of different sizes. A plastic deformation of the spring arms is not possible.

The tension clamp is fastened on the ribbed baseplate with T-bolt, washer and nut. At the beginning of the tension, both torsion spring arm rest on the rail foot. When the T-bolt is tightened, the middle bend is lead to the rail foot. The optimal mounting condition is reached when the middle bend is close to the rail foot.

Material

- » Plate: Structural steel / GJS ductile iron / cast steel
- » Rail clamp: Spring steel
- » Intermediate rail plates / plate pads: according to requirements
- » Corrosion protection: according to requirements

Technical description

- » Meets EN13481 standard for fastening categories A, B, C, D, E
- » Pre-assembly possible
- » Spring force about 12 kN/clamp

Cooperation with Getzner Werkstoffe

voestalpine and Getzner Werkstoffe, the world's leading specialist for vibration protection, founded a worldwide cooperation for elastic solutions in the railway sector. The cooperation agreement includes the development, manufacture, and marketing of vibration isolating products and systems to improve the quality of railway tracks.

The integration of elastic solutions in the railway superstructure protects against vibration and reduces track stress. With their cooperation, Getzner and voestalpine offer railway operators worldwide additional opportunities to increase the performance of sensitive railway network components and reduce life cycle costs.

www.getzner.com