



KE1/2 AND KE1/4

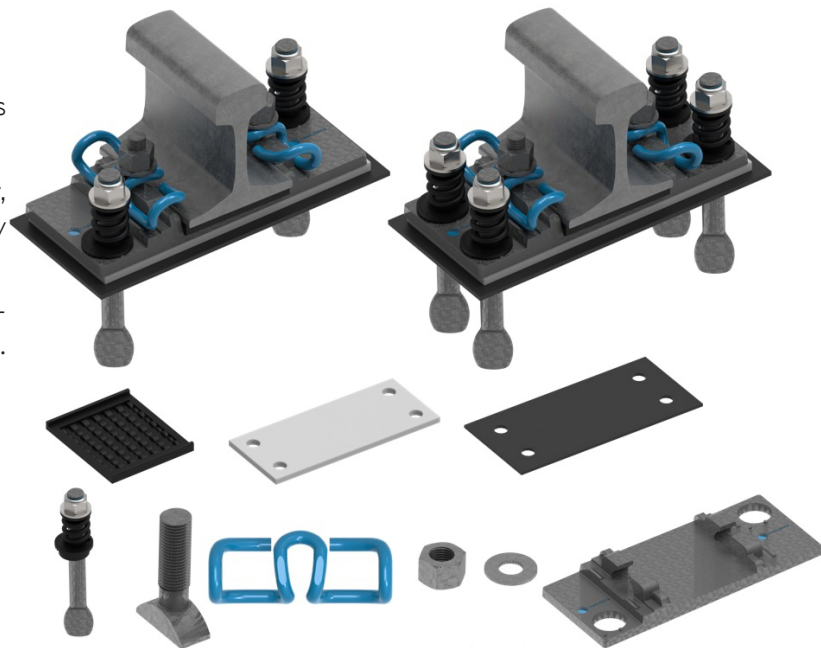
07-2023/V/1

Description

KE1/4 and KE1/2 systems are designed for ballastless tracks.

KE1/4 system is designed for C and D fastening category, while KE1/2 system is designed for D fastening category according to EN 13481-5 standard.

KE1/4 and KE1/2 systems meet all the EN 13481-5 standard requirements. The system ensures low static stiffness.



Technical aspects of KE1/2 and KE1/4

- » typical field of application – Conventional Rail, Urban area, tunnels and viaducts on ballastless track
- » axle load – max. 260 kN
- » speed \leq 250 km/h
- » high rail longitudinal resistance – min. 9 kN
- » clamping force – 18 kN \div 19 kN
- » gauge adjustment in the range \pm 10 mm with 1 mm increments
- » electrical resistance \geq 5 k Ω
- » regulation of vertical position through with regulation pads
- » the use of nuts with non-standard size polyamide inserts makes it difficult to dismantle the system by unauthorized persons
- » static stiffness of the system in standard version: up to 25 kN/mm (it is possible to adjust static stiffness according to the customer needs)