



KS-TYPE RAIL FASTENING SYSTEM FOR CONCRETE SLEEPERS

07-2023/V1

Description

KS-type fastening system is a classic railway line screw fastening.

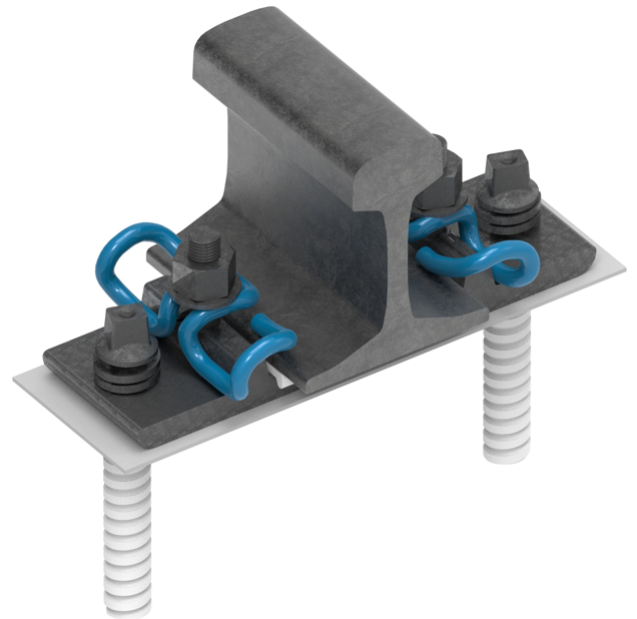
It is used on prestressed concrete sleepers around the world.

In case of the KS-type fastening system, the sleeper is connected to ribbed plate.

The under-base pad needs to be mounted under the ribbed plate.

Rail seat pad is mounted under the rail foot.

The rail is fixed using SKL12 clip.



Technical aspects of KS-type system

- » possibility of mounting on prestressed sleepers
- » SKL12 clip is used instead of standard κ p2 clips
- » proper insulation between the rail foot and the sleeper
- » electrical resistance $\geq 5 \text{ k}\Omega$