



SBW3

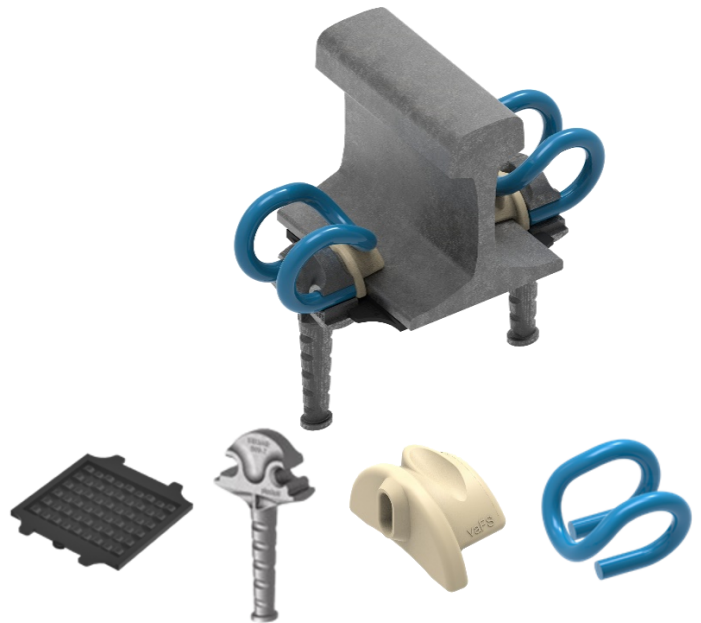
Description

The SBW3-type rail fastening system is the SB-type rail fastening system, with all rail mounting elements designed and produced by vaFS.

This system is characterized by the optimized parameters responsible for the way the rail is fastened.

The SB4-type rail clip can be used as an alternative to other SB-type rail clips.

The unique bending technology and high quality material guarantee that the product ensures the required pressure of the rail to the sleeper, as well as the possibility of resilient deformation of the rail in a horizontal plane by the action of lateral forces.



Technical aspects of SBW3 system

- » typical field of application – Conventional Rail with concrete sleeper on ballasted track
- » axle load – max. 260 kN
- » speed \leq 250 km/h
- » high rail longitudinal resistance – min. 9 kN
- » electrical resistance \geq 5 k Ω
- » clamping force for SB W3 fastening system – 20 kN \div 22 kN
- » gauge adjustment in the range of \pm 4 mm
- » material of the rail pad: TPU
- » guaranteed stability of the SB4-type rail clip during the long-term
- » combination of PWE-type rail pad and SB4-type of rail clip allows for a very high ability to attenuate impact loads (high damping rate) – min. 40%